



## PPIS PRIVATE LIMITED

No.77/10, 1<sup>st</sup> Floor,  
Above BESCO,  
Behind Airport Decathlon  
Chikkajala  
Bangalore North – 562 157

2

## VISION



PPIS shall be professionally managed best Solution Provider & global leader through innovative technology & customer centricity. create better environment, Empower employees & Contribute for society.

## MISSION



Our endeavour to provide Safe, Efficient, Innovative , affordable Product & services to our customers.

Employees are the asset of the company, our focus is to provide world-class training, create ethical work culture & empower to take decision of the business.

Collaborate globally with best People & Technology.

## VALUES



Customer-Centricity, Passion, Transparency, Sustainability,

## ABOUT PPIS

3

PPIS PRIVATE LIMITED founded in 06.04.2022 backed by most experienced power industry Veterans. Our Experience is combined with the passion to become key player in India's growth story.

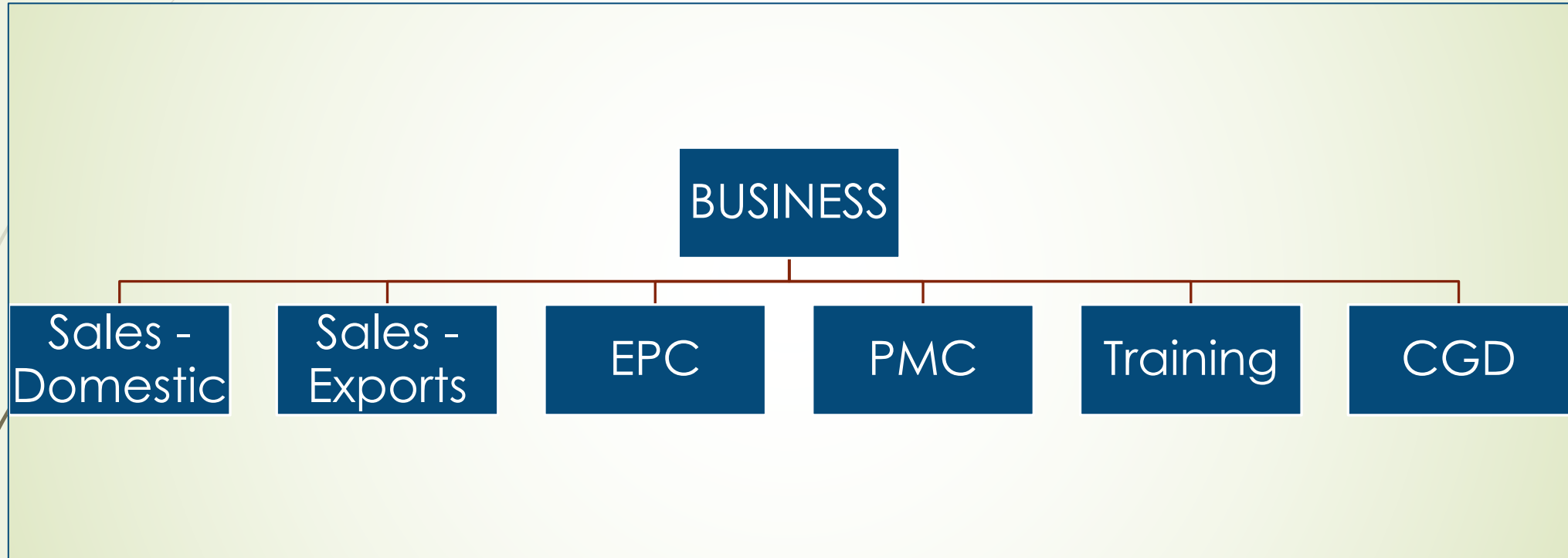
We at PPIS, Utilise our rich experience served in Various Electrical industries from last two decades, having right knowledge, Skill in the field of Energy Sector. Our Idea is to work on Innovative Technologies, Services & Solutions in various field including energy Transmission & distribution.

Team is having knowledge in underground Cabling systems, Sub-station Equipment's, Overhead network with Bare Conductors, Insulated Conductors, AB Cables & it's accessories. Work experience with Various Utilities, Industries & Strategic customers like railways, Metros, Defence, wind, Solar etc. We provide proper consultation, PRE & POST Installation & Maintenance Training.

We at PPIS ensure supply & appropriate Installations of Quality Products which is Safer, Reliable & contribute for Reducing power loss.

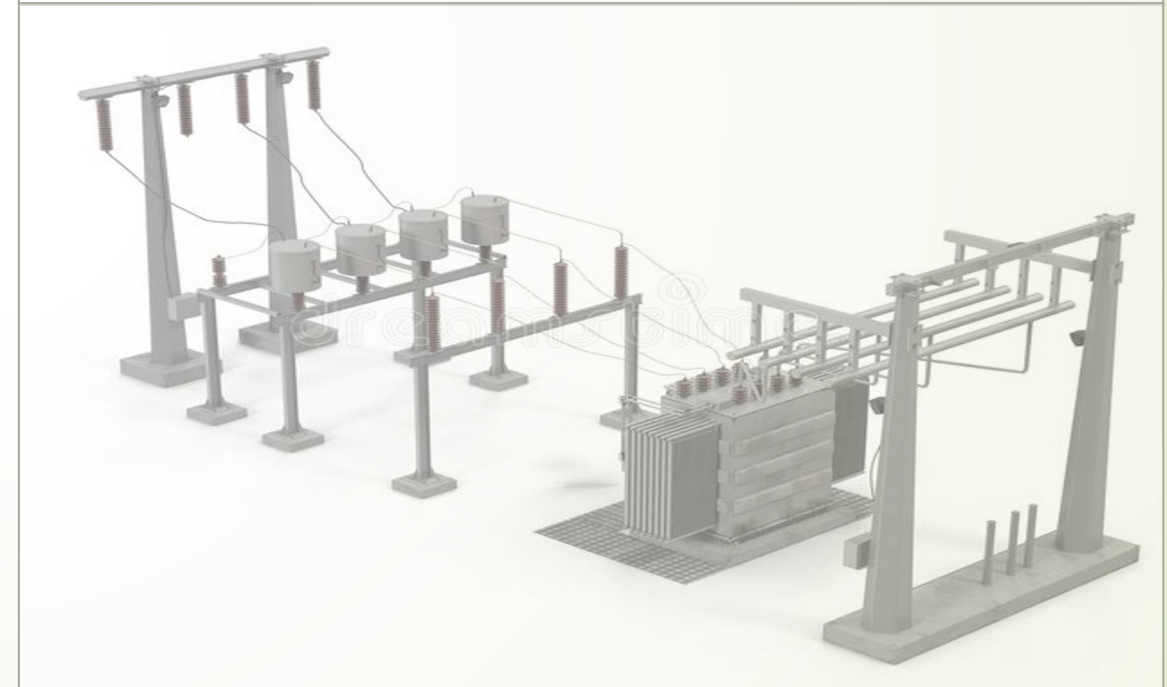
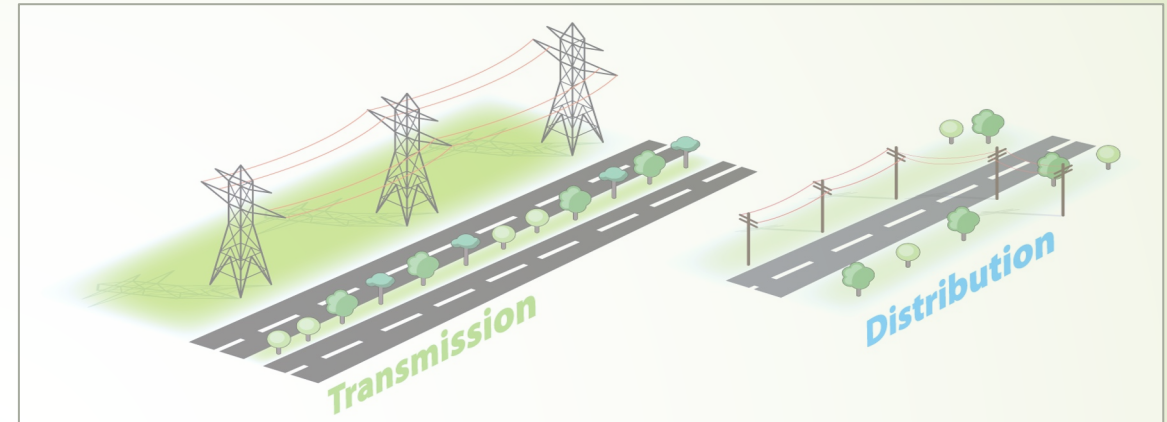
## BUSINESS DIVISION

4





- POWER GENERATION
- TRANSMISSION & DISTRIBUTIONS NETWORK
- INDUSTRIES & OEM
- METRO's
- AIRPORT
- PORTS
- RENEWABLES
- CNG & CGD





## KEY PRODUCT INCLUDES

1. SMC DISTRIBUTION BOXES
2. JUNCTION BOXES
3. WATER & ENERGY METER BOXES
4. SMC FEEDER PILLAR BOXES
5. SMC CHEQUERED PLATES
6. FRP CABLE TRAYS
7. FRP BATTERY STANDS
8. FRP CROSS ARM
9. FRP LADDERS
10. FRP FENCING

SINTEX is one of the largest manufacturers of electrical enclosures, catering to all state electricity board & Industries. Being shockproof, SMCs provide insulation against electricity and are used as cast iron and aluminium alternatives. They are also rust-proof, durable, protecting from theft.



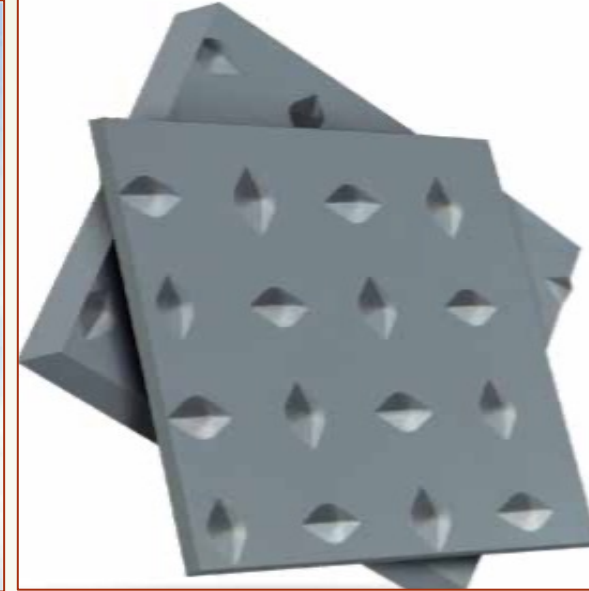
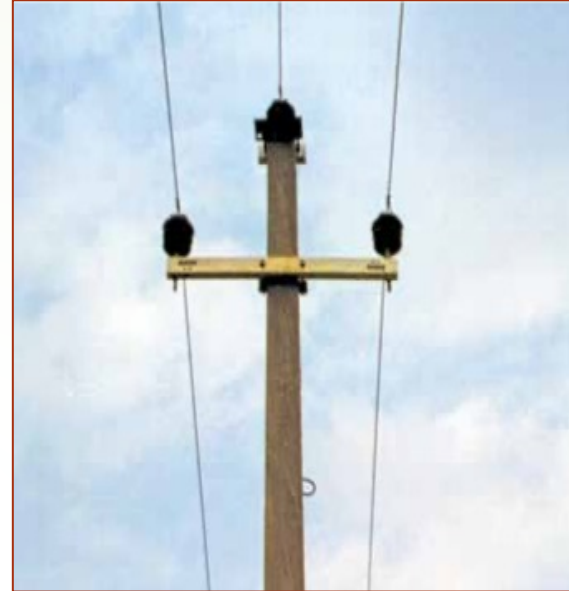
# SINTEX SMC FRP PRODUCT RANGE

7



## Product Features

1. Weather Proof
2. UV Stabilised
3. Fire Retardant
4. Non-Magnetic
5. No Corrosion
6. No Chemical
7. Lightweight
8. Easy to Install
9. Mechanically Very Strong



**Sintex**  
Industries Limited



## KEY PRODUCT INCLUDES

1. Chemical Storage Tanks
2. Acid Storage Tanks
2. Underground Fuel Storage Tanks
3. On-ground Chemical Storage Tanks

Start with Capacity of 5 KL for OIL & 10 KL for FUEL

## CUSTOMER TO FOCUS

1. AIRPORT
2. FOOD PROCESSING
3. MRPL/OMPL
4. INDUSTRIES
5. COMMERCIAL Bldg.





## HV/MV CAPACITORS



1. LV/MV & Shunt Capacitors Bank up to 245 KV
2. LV Automatic Power Factor Correction System
3. Lightning Arresters (Station & Distribution Class)
4. Galvanised Steel structures & Towers
5. Harmonic Filters
6. MV Switchgears

**Shreem**





## PORCELAIN HOUSING

1. Range : 3 KV to 198 KV



## POLYMER HOUSING

1. LINE DISCHARGE CLASS-I,II,III
2. Range : 3 KV to 36 KV



## MV POLE MOUNTED CAPACITOR BANK

- Always connected in parallel to Equipment
- Protection of Equipment for Sub-station against Over voltage caused by Lightning or Switching Surges

- Max Power – 150 to 3500 KVAR
- Rated Voltage – 11 to 33 KV
- Insulation Level – Up to 50/125 KV/BL

**Shreem**



SEGMENTS	VOLTAGE RATING (kV)	MECHANICAL LOAD (KN)	CREEPAGE (mm/kV)
DISTRIBUTION (DISC INSULATORS)	11 / 15 kV	45 / 70 KN	25 / 31 / 40 mm/kV
	22 / 33 / 36 kV	45 / 70 / 90 KN	25 / 31 / 40 mm/kV
HV TRANSMISSION	66 / 72 kV	90 / 120 KN	25 / 31 mm/kV
	110 / 132 / 145 kV	70 / 90 / 120 / 160 KN	25 / 31 mm/kV
	220 / 245 kV	70 / 90 / 120 / 160 KN	25 / 31 mm/kV
	400 / 420 kV	120 / 160 / 210 KN	25 / 31 mm/kV
UHV TRANSMISSION	765 kV	120 / 160 / 210 / 320 kN	25 / 31 mm/kV
PIN INSULATORS	11 / 22 / 33 kV	5 / 10 KN	25 / 31 mm/kV
LINE POST INSULATORS	11 / 33 kV	12.5 KN	40 mm/kV
POST INSULATORS	11 / 33 kV	4 - 10 KN	25 / 31 mm/kV
STATION POST INSULATORS	66 / 110 / 132 / 220 / 400 kV	4 - 10 KN	25 / 31 / 40 mm/kV

Silicon Composite Insulators ranging from 11-765 KV : PGCIL Approved

- Light Weight
- Hydrophobicity
- High Mechanical Strength (FRP Rod)
- Suitable for Polluted & salty Environment
- Anti Tracking properties

12

## INSULATORS UP TO 765 KV

## SURGE ARRESTERS UP TO 42 KV

SEGMENTS	VOLTAGE RATING (kv)	CURRENT (ka)	CREEPAGE (min.)
DISTRIBUTION CLASS	9 / 11 / 12 KV	5 / 10 kA, CLASS 2 / 3	300 mm
STATION CLASS	30 / 33 / 36 kv / 42 kv	10 kA, CLASS 1 / 2 / 3 10 kA, CLASS 2 / 3	900 mm 1200 mm



BUS POST INSULATORS



TRANSMISSION INSULATORS



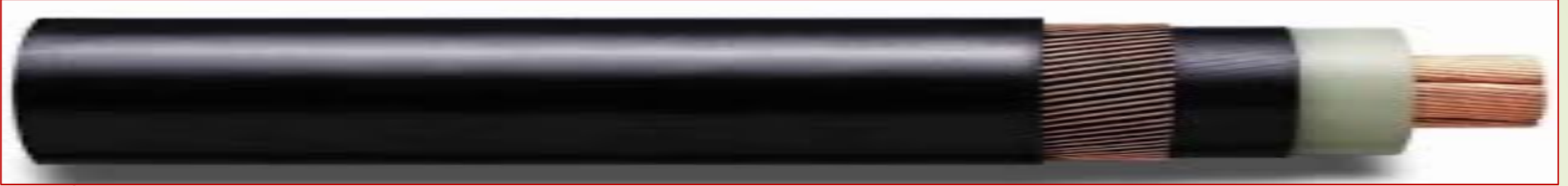
DISTRIBUTION INSULATORS



### STATE ELECTRICITY BOARDS





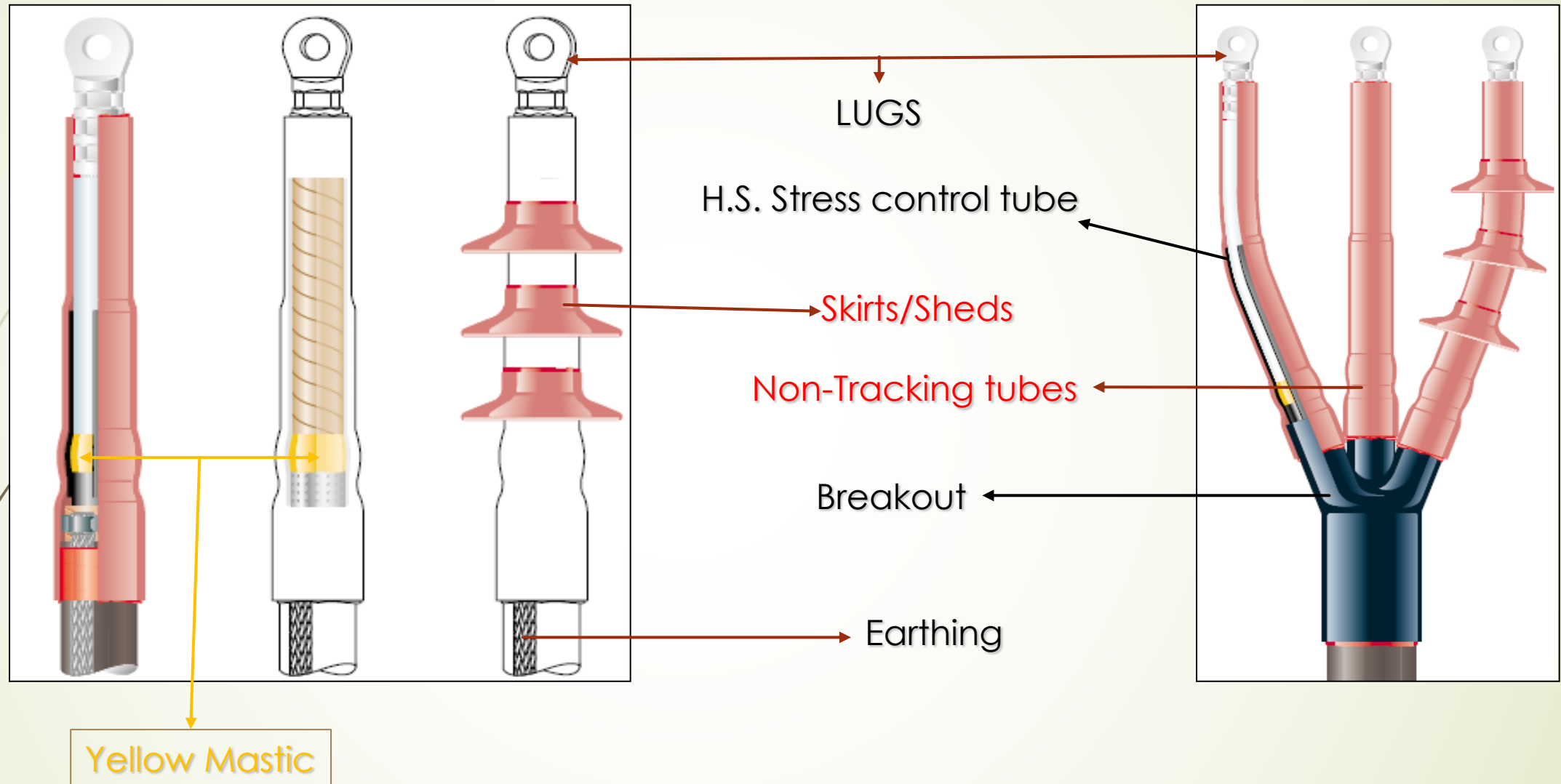


**All Power Cables Ranging from 1.1 KV/11KV/33 KV up to 66 KV including**

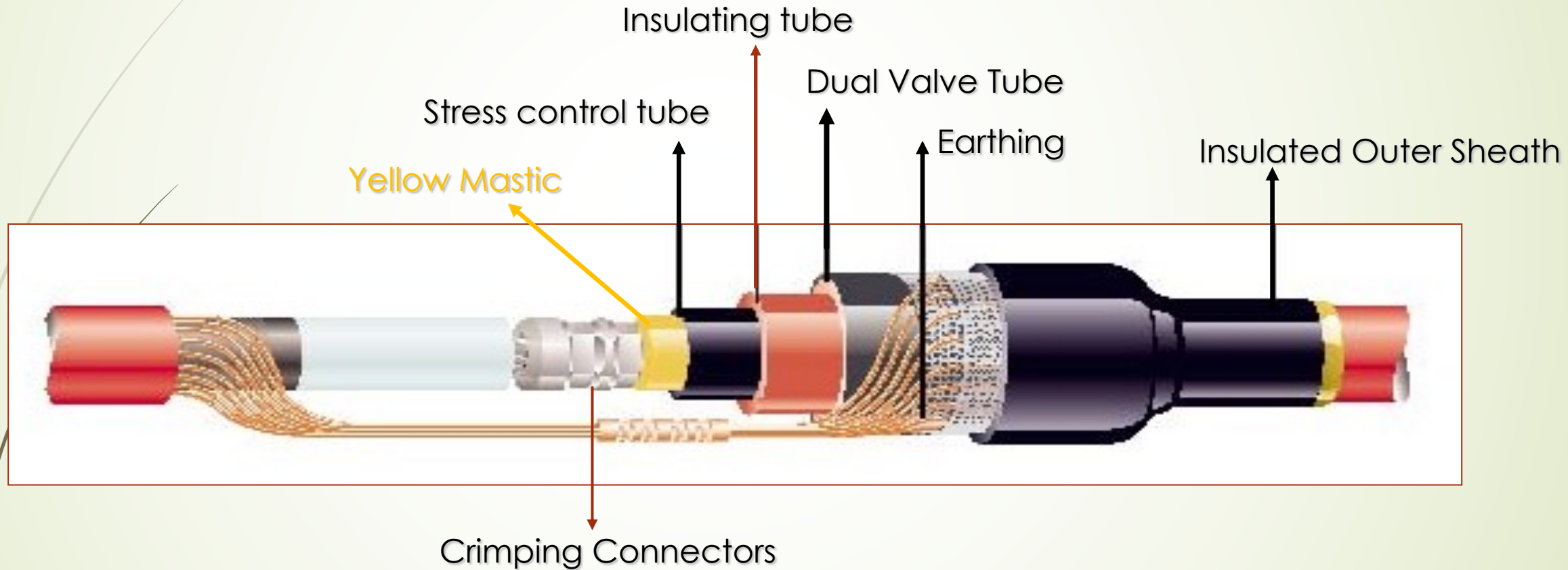
- A. Control & Instrumentations Cables**
- B. EPR/RUBBER/Flexible Cables**
- C. Fire Safety Cables**
- D. Industrial & House Wires**



14





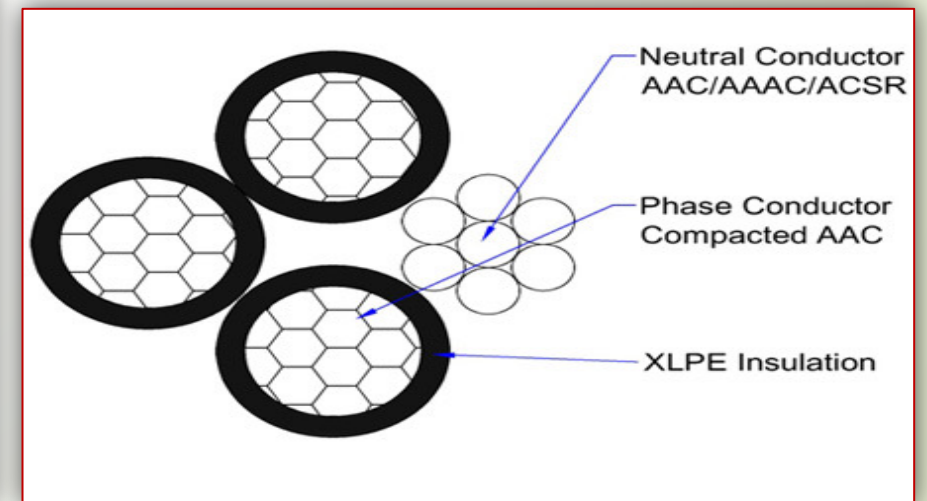
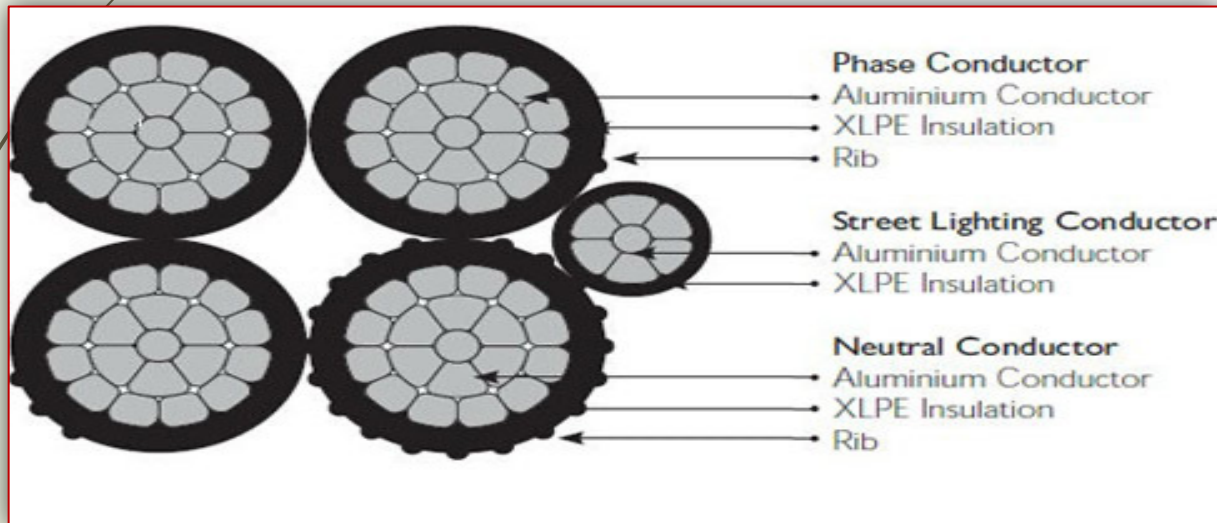




17

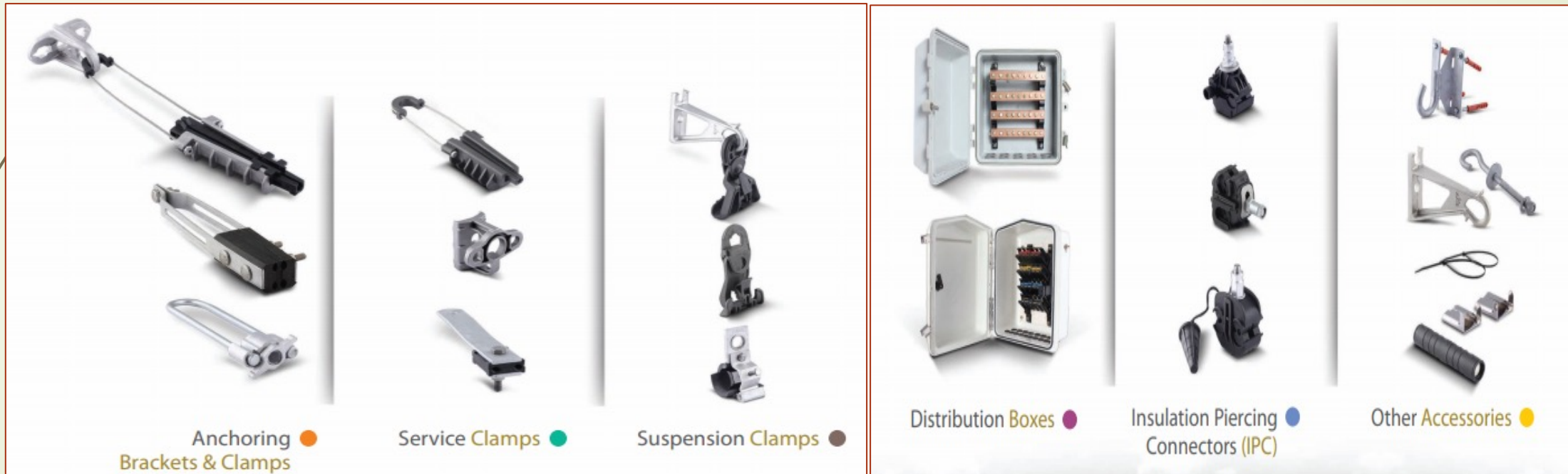
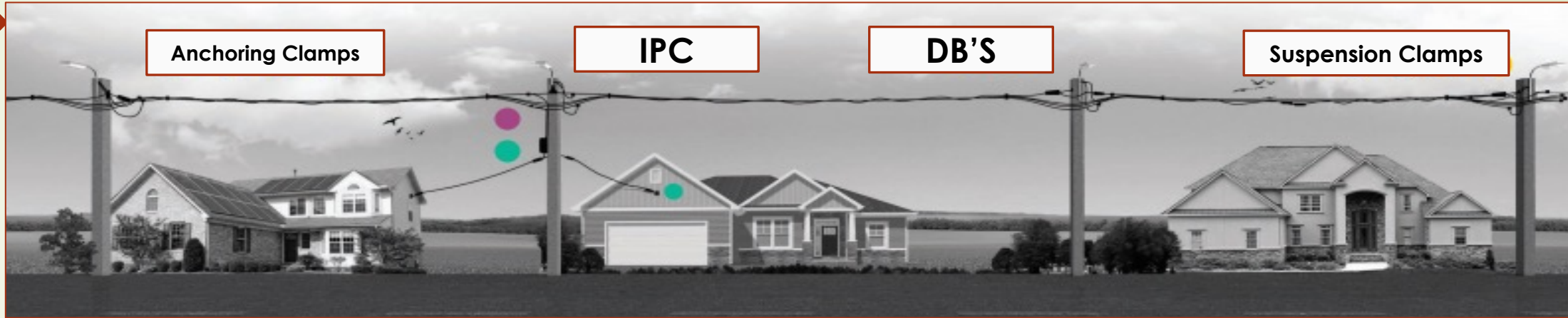


**NFC 33-209 for 0.6/1 KV & VDE & IEC**





18



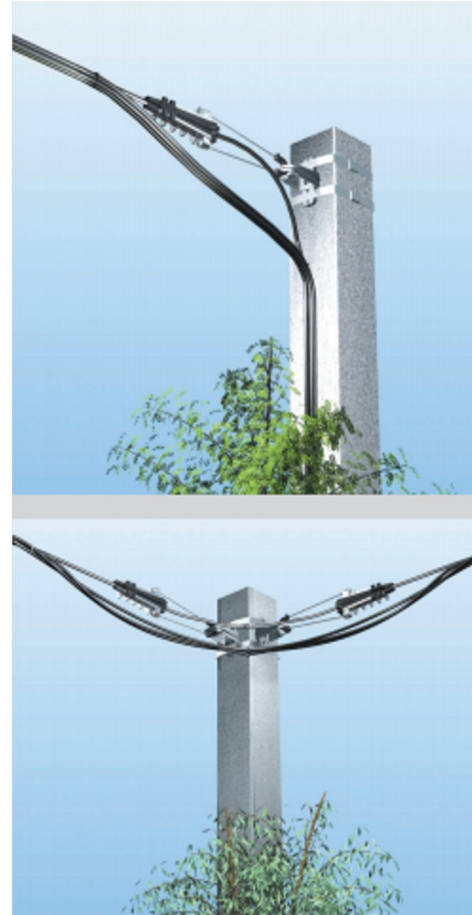
19



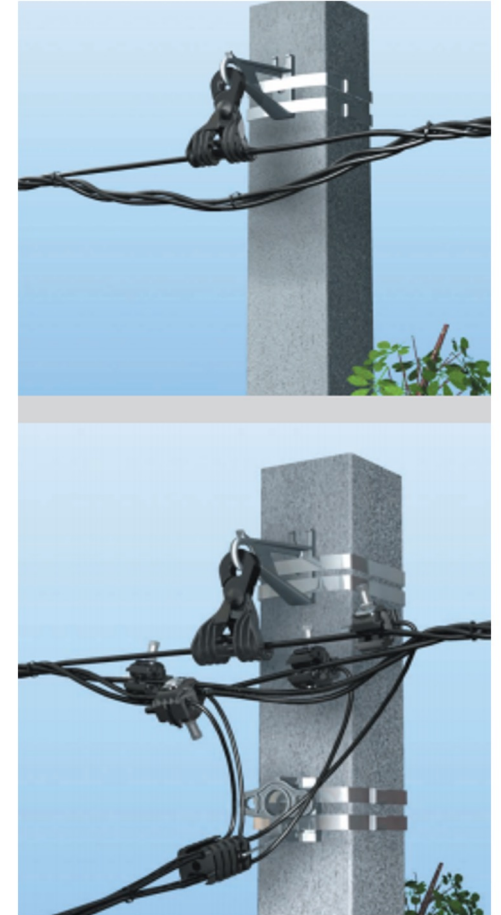
**Pre-Insulated Mid Span Joints & Bi-Metallic Terminations**



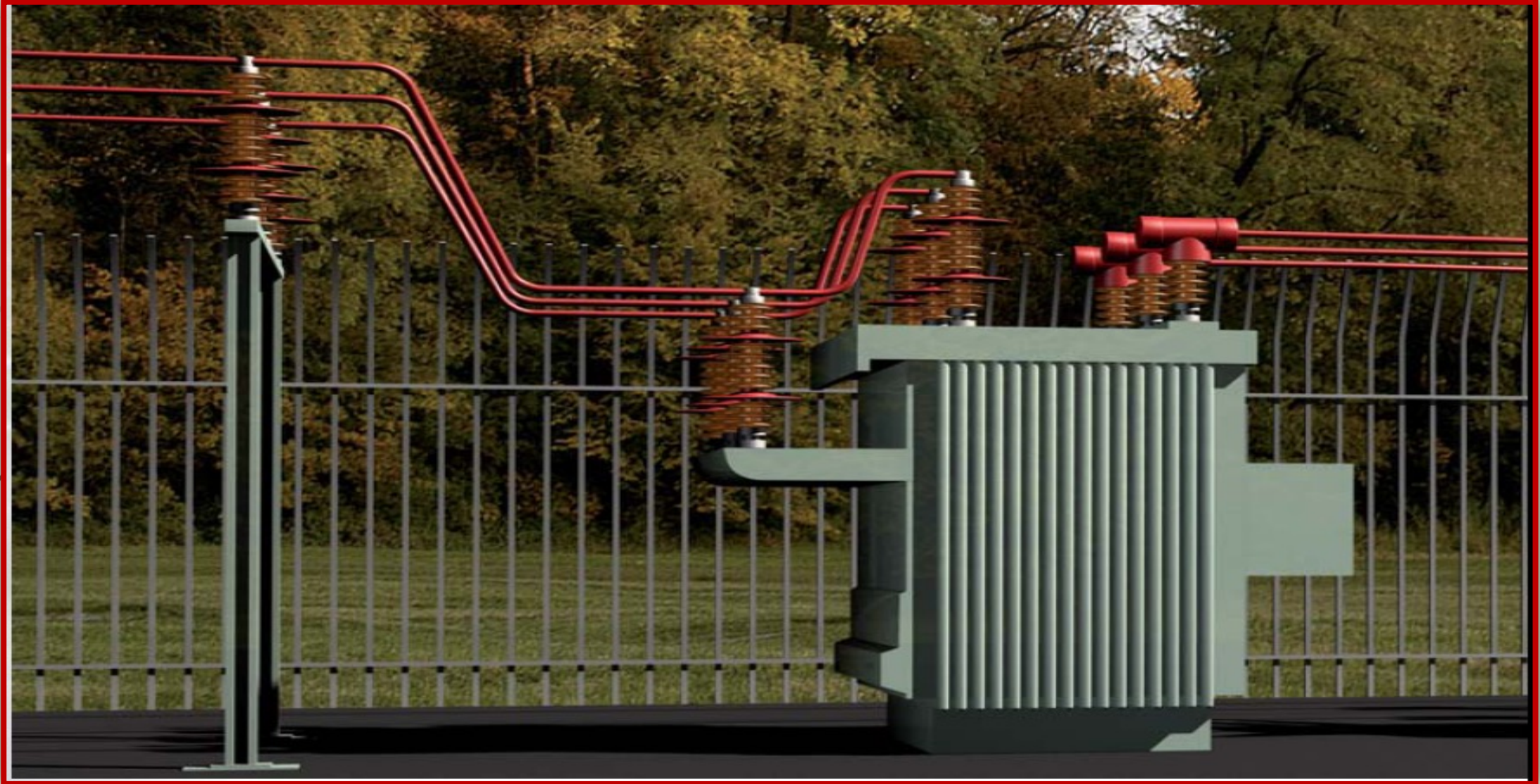
**Insulated Piercing/Branch Connectors**



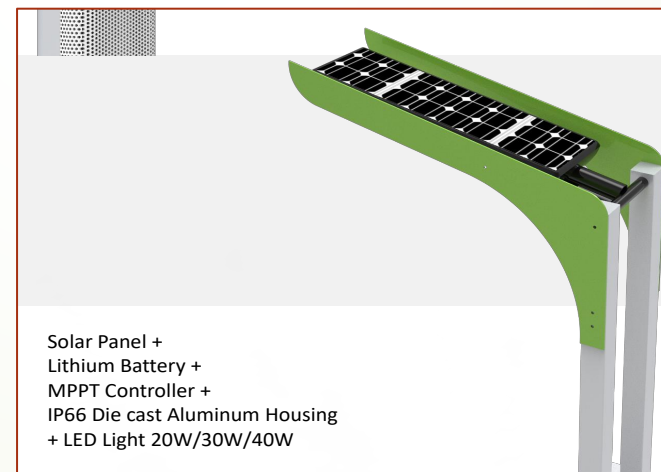
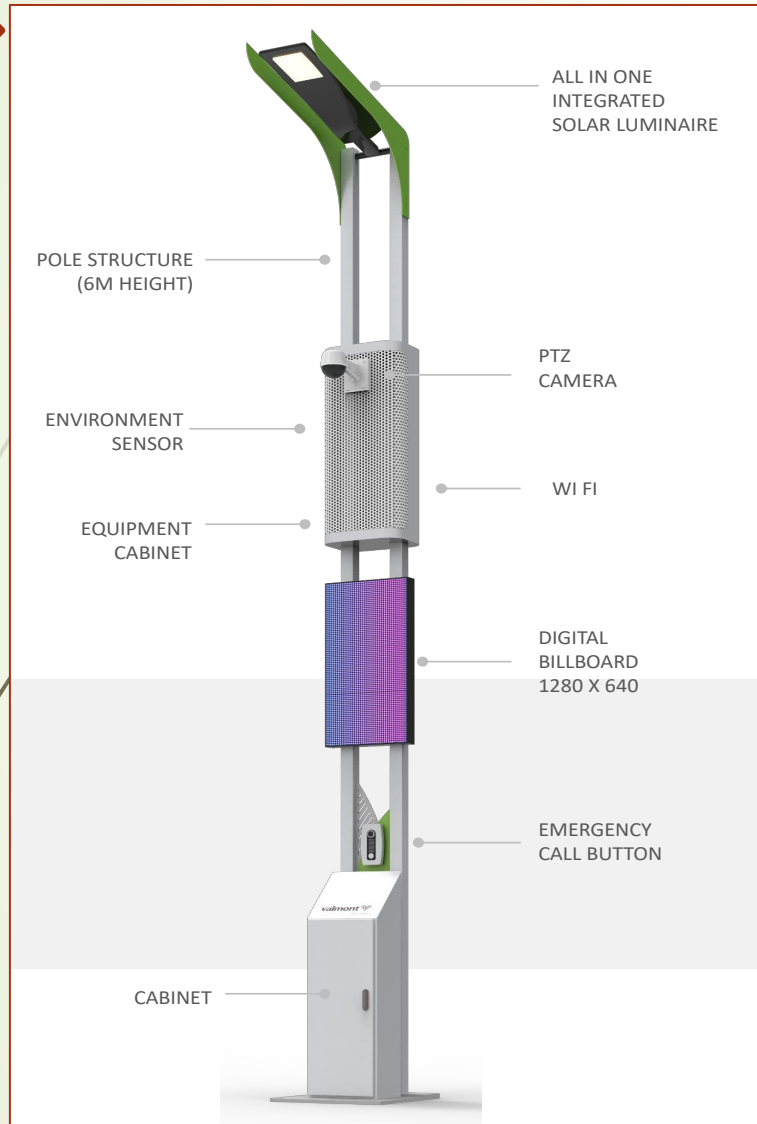
**Anchoring & Suspension Clamps**

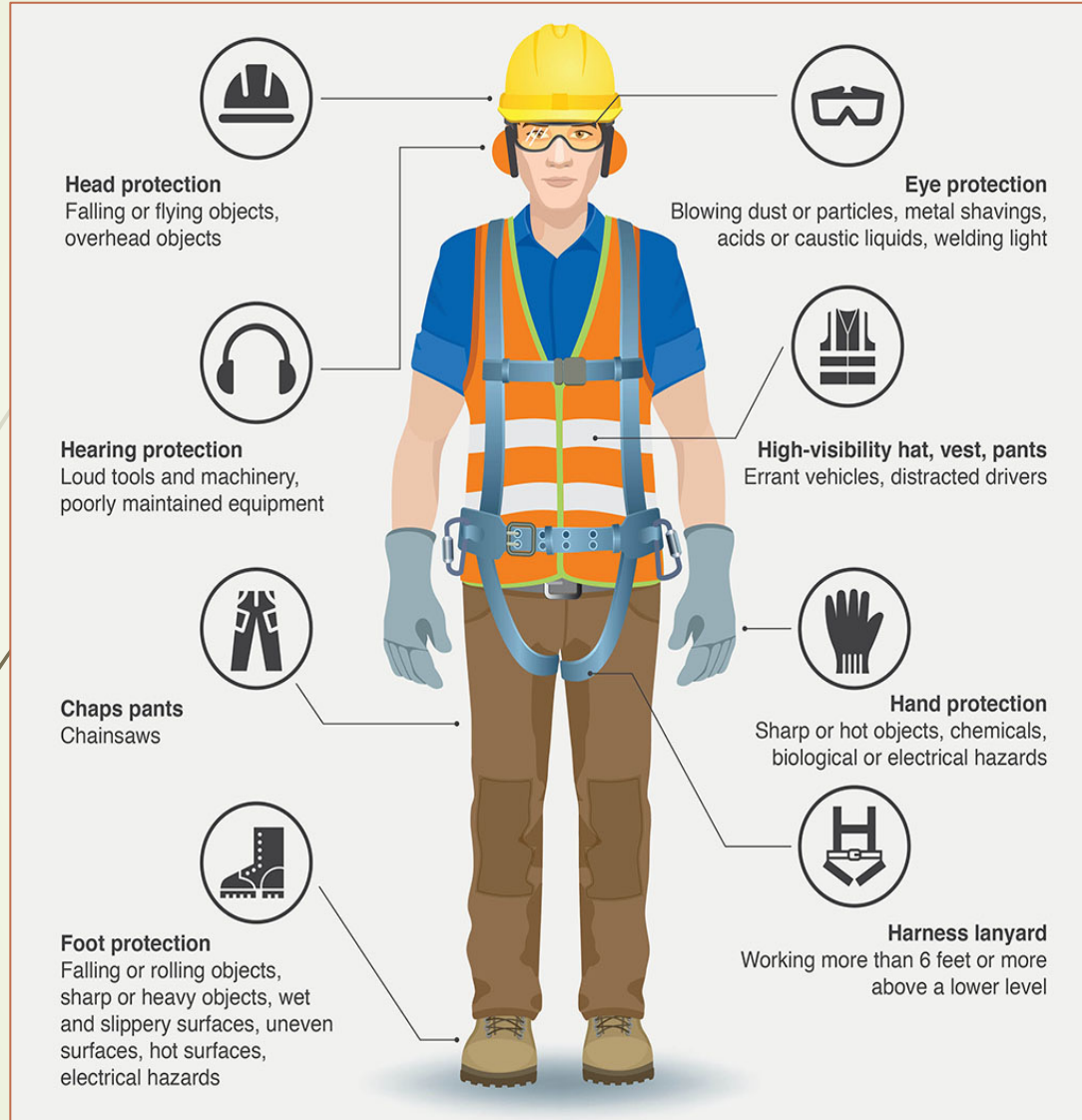












- ☐ Helmet (Mechanical & Induction)
- ☐ Face Shield & Safety Glasses – Face PPE
- ☐ Insulation Equipment
- ☐ Non-Conduction Rods
- ☐ Earthing Clamps & Fittings
- ☐ Safety Signs
- ☐ Safety Shoes – PPE for Shoes
- ☐ Hearing Protection ear-muffs
- ☐ Safety Vest



# CONSTRUCTION SOLUTIONS FOR THE POWER SECTOR

**SERVICE OFFERINGS @**







Cable Trench - With Pipe



Cable Trench - Direct Burial



We are offering HT/LT underground cable services all over India. Client satisfaction & quality service has always been our top priority. With the appreciable assistance of our professionals, we carry out these services in the best possible manner and we apply modern cable pulling technique. These services are offered at the optimized cost within decided time interval.





If you install cables, you need to install joints & terminations. We provide certified installation crew with in PPIS to carry out Installations of Cable jointing & termination ranging from LV up to 220kV. We also carry out cable DC pressure testing on HV cables, as well as high voltage cable jointing.





With our in-depth industry experience, we are engaged in providing electrical services for the Substation Work (220/132/66/33/11 KV). In addition to this, we hold vast experience in this domain that enables us to cater to various needs of our clients in the best & effective manner. Moreover, offered services are provided to our clients at effective cost.

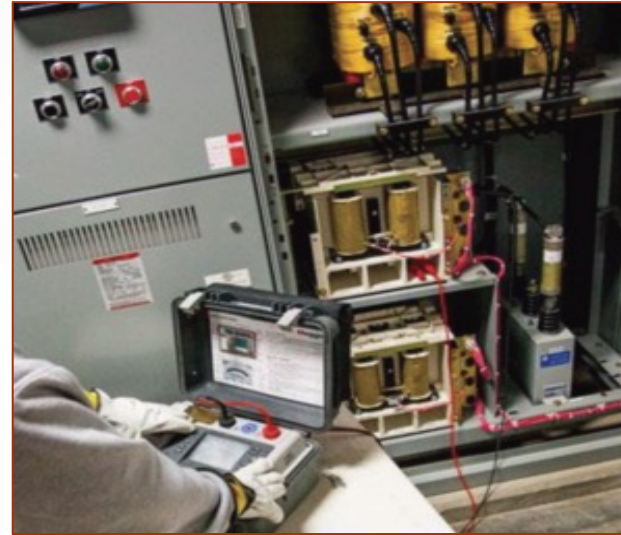
# O/H BARE CONDUCTOR(11 to 220 KV), Covered Conductor & AB Cable Installation with associate accessories

27



We at PPIS offering our valued customers a supreme quality range of EHV, HT/LT overhead line equipment services. These services are in demand in power industry for installation of overhead Transmission & Distribution segment. Keeping in mind the precise demands of clients, we offer an effective EHV, HT & LT Installation Services to our valued clients. We provide these services to various industrial and commercial projects. Our state-of-the-art infrastructure is well-equipped with the latest tools and innovative technologies which enable us to offer perfect EHV, HT & LT Installation Services to our valued clients



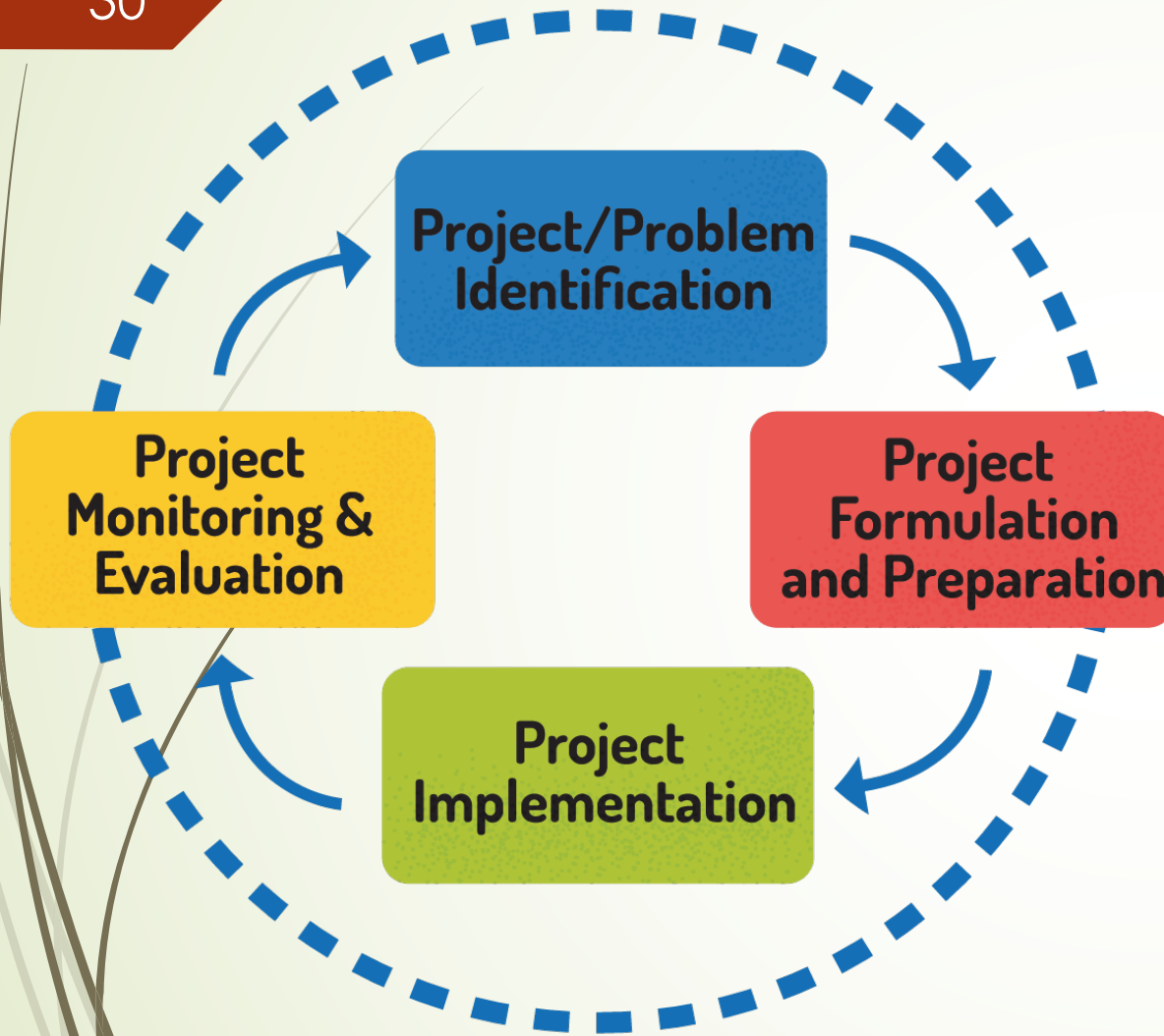


PPIS offers complete testing, maintenance & repair services of electrical substation and distribution equipment like transformers, CB, Panel . Services Include:- Transformer oil leakage rectifications and re-gasketing, Transformer oil re-refining, degassing and dehydrating, Electrical testing and repairs of Electrical Equipment , Transformer and Circuit Breaker reconditioning

# PROJECT MANAGEMENT

## PROJECT MANAGEMENT CONSULTING





- ❑ Identifying Opportunities
- ❑ Gathering Pre-qualification Requirements
- ❑ Evaluating JV Partners (if required)
- ❑ Preparing Executive Summary, Cost, Project Overhead & Cashflow
- ❑ Market & Competition Analysis
- ❑ Managing Pre & Post Bid Meetings
- ❑ Creating Project Completion Schedule Incl. Material Planning, Execution & Monitoring
- ❑ Overseeing Contractual Correspondence & Follow-up (available on standalone basis as well)
- ❑ Managing progress, work certification and billing



# COMPLETED PROJECTS

Our best achievements



32

**Installation of 8 Nos of 33 KV GIS terminations & 70 Nos of 11 KV Heat shrinkable Joints & Terminations**  
**Work Started on : 07<sup>th</sup> Jan 2022 & Work Completed on : 22<sup>nd</sup> Mar 2022.**



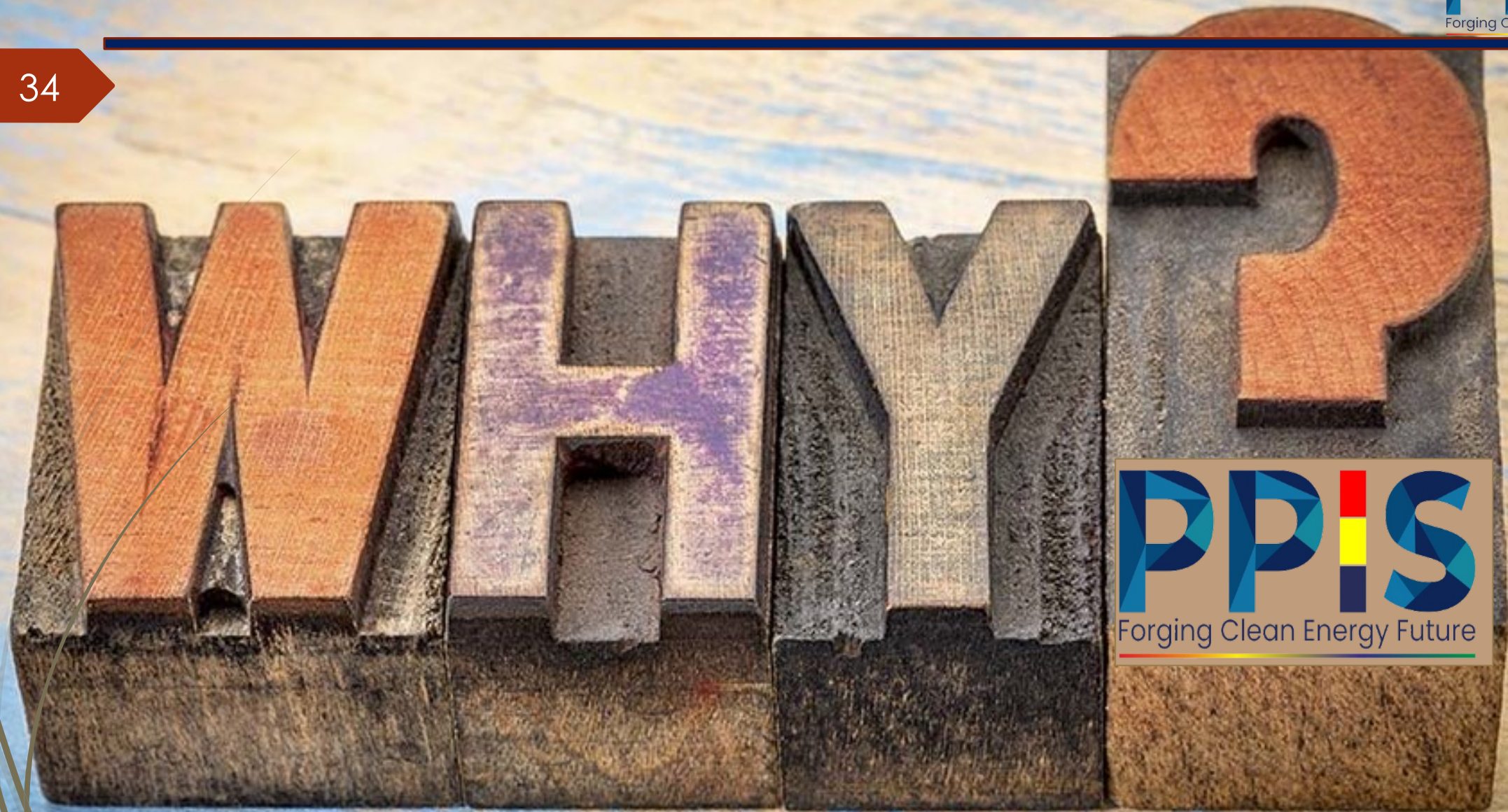


33

**Installation of 6 Nos of 66 KV 1CX630 SQ.MM OUTDOOR TERMINATIONS**  
**Work Started on : 17<sup>th</sup> Mar 2022 & Work Completed on : 20<sup>th</sup> MAR 2022.**









1. PROFESSIONAL & EXPERIENCED TEAM
2. TWO DECADES IN ELECTRICAL INDUSTRIES
3. UNDERSTAND CUSTOMER PAIN AREA
4. QUALITY CONCIOUS
5. CONTINUOUS TRAINING FOR ENTIRE TEAM TO DEVELOP SKILLS
6. SENIOR TECHNICAL CONSULTANTS IN TEAM
7. COLLABRATION WITH INNOVATIVE PRODUCTS & SOLUTIONS
8. MARKET REASEARCH
9. COMBINATION OF PRODUCTS, PROJECTS & SOLUTIONS
10. ISO 9001:2015 : IEC CERTIFICATIONS & PVT LIMITED – with GREAT VISION





PPIS PRIVATE LIMITED  
No.77/10, 1<sup>st</sup> Floor, Above BESCO, Behind Airport Decathlon  
Chickkajala, Bangalore North – 562 157

Kindly send us Enquiries on  
**veer@ppis.in, sandeepjasoria@ppis.in contacts@ppis.in**